

HISTORIC AND DESIGN REVIEW COMMISSION

April 06, 2022

HDRC CASE NO: 2022-179
COMMON NAME: Dawson at N Olive
LEGAL DESCRIPTION: NCB 570 (OLIVE-DAWSON SUBD), BLOCK 6 LOT 23
NCB 570 (OLIVE-DAWSON SUBD), BLOCK 6 LOT 22
NCB 570 (OLIVE-DAWSON SUBD), BLOCK 6 LOT 21
ZONING: RM-4, H
CITY COUNCIL DIST.: 2
DISTRICT: Dignowity Hill Historic District
APPLICANT: Raul Ruiz/OliveDawson LLC
OWNER: Raul Ruiz/OliveDawson LLC
TYPE OF WORK: Construction of three, 1-story residential structures
APPLICATION RECEIVED: March 23, 2022
60-DAY REVIEW: Not applicable due to City Council Emergency Orders
CASE MANAGER: Edward Hall

REQUEST:

The applicant is requesting conceptual approval of a site plan for the construction of three (3), 1-story residential structures on the vacant lot at the southwest corner of Dawson and N Olive, located within the Dignowity Hill Historic District. These lots are currently unaddressed.

APPLICABLE CITATIONS:

Historic Design Guidelines, Chapter 4, Guidelines for New Construction

1. Building and Entrance Orientation

A. FAÇADE ORIENTATION

- i. Setbacks*—Align front facades of new buildings with front facades of adjacent buildings where a consistent setback has been established along the street frontage. Use the median setback of buildings along the street frontage where a variety of setbacks exist. Refer to UDC Article 3, Division 2. Base Zoning Districts for applicable setback requirements.
- ii. Orientation*—Orient the front façade of new buildings to be consistent with the predominant orientation of historic buildings along the street frontage.

B. ENTRANCES

- i. Orientation*—Orient primary building entrances, porches, and landings to be consistent with those historically found along the street frontage. Typically, historic building entrances are oriented towards the primary street.

2. Building Massing and Form

A. SCALE AND MASS

- i. Similar height and scale*—Design new construction so that its height and overall scale are consistent with nearby historic buildings. In residential districts, the height and scale of new construction should not exceed that of the majority of historic buildings by more than one-story. In commercial districts, building height shall conform to the established pattern. If there is no more than a 50% variation in the scale of buildings on the adjacent block faces, then the height of the new building shall not exceed the tallest building on the adjacent block face by more than 10%.
- ii. Transitions*—Utilize step-downs in building height, wall-plane offsets, and other variations in building massing to provide a visual transition when the height of new construction exceeds that of adjacent historic buildings by more than one-half story.
- iii. Foundation and floor heights*—Align foundation and floor-to-floor heights (including porches and balconies) within one foot of floor-to-floor heights on adjacent historic structures.

B. ROOF FORM

- i. Similar roof forms*—Incorporate roof forms—pitch, overhangs, and orientation—that are consistent with those predominantly found on the block. Roof forms on residential building types are typically sloped, while roof forms on nonresidential building types are more typically flat and screened by an ornamental parapet wall.
- ii. Façade configuration*—The primary façade of new commercial buildings should be in keeping with established patterns. Maintaining horizontal elements within adjacent cap, middle, and base precedents will establish a consistent street wall through the alignment of horizontal parts. Avoid blank walls, particularly on elevations visible from the street. No new façade should exceed 40 linear feet without being penetrated by windows, entryways, or other defined bays.

D. LOT COVERAGE

- i. Building to lot ratio*—New construction should be consistent with adjacent historic buildings in terms of the building to lot ratio. Limit the building footprint for new construction to no more than 50 percent of the total lot area, unless adjacent historic buildings establish a precedent with a greater building to lot ratio.

3. Materials and Textures

A. NEW MATERIALS

- i. Complementary materials*—Use materials that complement the type, color, and texture of materials traditionally found in the district. Materials should not be so dissimilar as to distract from the historic interpretation of the district. For example, corrugated metal siding would not be appropriate for a new structure in a district comprised of homes with wood siding.
- ii. Alternative use of traditional materials*—Consider using traditional materials, such as wood siding, in a new way to provide visual interest in new construction while still ensuring compatibility.
- iii. Roof materials*—Select roof materials that are similar in terms of form, color, and texture to traditionally used in the district.
- iv. Metal roofs*—Construct new metal roofs in a similar fashion as historic metal roofs. Refer to the Guidelines for Alterations and Maintenance section for additional specifications regarding metal roofs.
- v. Imitation or synthetic materials*—Do not use vinyl siding, plastic, or corrugated metal sheeting. Contemporary materials not traditionally used in the district, such as brick or simulated stone veneer and Hardie Board or other fiberboard siding, may be appropriate for new construction in some locations as long as new materials are visually similar to the traditional material in dimension, finish, and texture. EIFS is not recommended as a substitute for actual stucco.

4. Architectural Details

A. GENERAL

- i. Historic context*—Design new buildings to reflect their time while respecting the historic context. While new construction should not attempt to mirror or replicate historic features, new structures should not be so dissimilar as to distract from or diminish the historic interpretation of the district.
- ii. Architectural details*—Incorporate architectural details that are in keeping with the predominant architectural style along the block face or within the district when one exists. Details should be simple in design and should complement, but not visually compete with, the character of the adjacent historic structures or other historic structures within the district.
Architectural details that are more ornate or elaborate than those found within the district are inappropriate.
- iii. Contemporary interpretations*—Consider integrating contemporary interpretations of traditional designs and details for new construction. Use of contemporary window moldings and door surroundings, for example, can provide visual interest while helping to convey the fact that the structure is new. Modern materials should be implemented in a way that does not distract from the historic structure.

5. Garages and Outbuildings

A. DESIGN AND CHARACTER

- i. Massing and form*—Design new garages and outbuildings to be visually subordinate to the principal historic structure in terms of their height, massing, and form.
- ii. Building size*—New outbuildings should be no larger in plan than 40 percent of the principal historic structure footprint.

- iii. Character—Relate new garages and outbuildings to the period of construction of the principal building on the lot through the use of complementary materials and simplified architectural details.
- iv. Windows and doors—Design window and door openings to be similar to those found on historic garages or outbuildings in the district or on the principle historic structure in terms of their spacing and proportions.
- v. Garage doors—Incorporate garage doors with similar proportions and materials as those traditionally found in the district.

B. SETBACKS AND ORIENTATION

- i. Orientation—Match the predominant garage orientation found along the block. Do not introduce front-loaded garages or garages attached to the primary structure on blocks where rear or alley loaded garages were historically used.
 - ii. Setbacks—Follow historic setback pattern of similar structures along the streetscape or district for new garages and outbuildings. Historic garages and outbuildings are most typically located at the rear of the lot, behind the principal building. In some instances, historic setbacks are not consistent with UDC requirements and a variance may be required.
- ### 6. Mechanical Equipment and Roof Appurtenances

A. LOCATION AND SITING

- i. *Visibility*—Do not locate utility boxes, air conditioners, rooftop mechanical equipment, skylights, satellite dishes, and other roof appurtenances on primary facades, front-facing roof slopes, in front yards, or in other locations that are clearly visible from the public right-of-way.
- ii. *Service Areas*—Locate service areas towards the rear of the site to minimize visibility from the public right-of-way.

B. SCREENING

- i. *Building-mounted equipment*—Paint devices mounted on secondary facades and other exposed hardware, frames, and piping to match the color scheme of the primary structure or screen them with landscaping.
 - ii. *Freestanding equipment*—Screen service areas, air conditioning units, and other mechanical equipment from public view using a fence, hedge, or other enclosure.
 - iii. *Roof-mounted equipment*—Screen and set back devices mounted on the roof to avoid view from public right-of-way.
- Historic Design Guidelines, Chapter 5, Guidelines for Site Elements

Historic Design Guidelines, Chapter 5, Guidelines for Site Elements

B. NEW FENCES AND WALLS

- i. *Design*—New fences and walls should appear similar to those used historically within the district in terms of their scale, transparency, and character. Design of fence should respond to the design and materials of the house or main structure.
- ii. *Location*—Avoid installing a fence or wall in a location where one did not historically exist, particularly within the front yard. The appropriateness of a front yard fence or wall is dependent on conditions within a specific historic district.
New front yard fences or wall should not be introduced within historic districts that have not historically had them.
- iii. *Height*—Limit the height of new fences and walls within the front yard to a maximum of four feet. The appropriateness of a front yard fence is dependent on conditions within a specific historic district. New front yard fences should not be introduced within historic districts that have not historically had them. If a taller fence or wall existed historically, additional height may be considered. The height of a new retaining wall should not exceed the height of the slope it retains.
- iv. *Prohibited materials*—Do not use exposed concrete masonry units (CMU), Keystone or similar interlocking retaining wall systems, concrete block, vinyl fencing, or chain link fencing.
- v. *Appropriate materials*—Construct new fences or walls of materials similar to fence materials historically used in the district. Select materials that are similar in scale, texture, color, and form as those historically used in the district, and that are compatible with the main structure. Screening incompatible uses—Review alternative fence heights and materials for appropriateness where residential properties are adjacent to commercial or other potentially incompatible uses.

3. Landscape Design

A. PLANTINGS

- i. Historic Gardens*—Maintain front yard gardens when appropriate within a specific historic district.
- ii. Historic Lawns*—Do not fully remove and replace traditional lawn areas with impervious hardscape. Limit the removal of lawn areas to mulched planting beds or pervious hardscapes in locations where they would historically be found, such as along fences, walkways, or drives. Low-growing plantings should be used in historic lawn areas; invasive or large-scale species should be avoided. Historic lawn areas should never be reduced by more than 50%.
- iii. Native xeric plant materials*—Select native and/or xeric plants that thrive in local conditions and reduce watering usage. See UDC Appendix E: San Antonio Recommended Plant List—All Suited to Xeriscape Planting Methods, for a list of appropriate materials and planting methods. Select plant materials with a similar character, growth habit, and light requirements as those being replaced.
- iv. Plant palettes*—If a varied plant palette is used, incorporate species of taller heights, such informal elements should be restrained to small areas of the front yard or to the rear or side yard so as not to obstruct views of or otherwise distract from the historic structure.
- v. Maintenance*—Maintain existing landscape features. Do not introduce landscape elements that will obscure the historic structure or are located as to retain moisture on walls or foundations (e.g., dense foundation plantings or vines) or as to cause damage.

B. ROCKS OR HARDSCAPE

- i. Impervious surfaces* —Do not introduce large pavers, asphalt, or other impervious surfaces where they were not historically located.
- ii. Pervious and semi-pervious surfaces*—New pervious hardscapes should be limited to areas that are not highly visible, and should not be used as wholesale replacement for plantings. If used, small plantings should be incorporated into the design.
- iii. Rock mulch and gravel* - Do not use rock mulch or gravel as a wholesale replacement for lawn area. If used, plantings should be incorporated into the design.

D. TREES

- i. Preservation*—Preserve and protect from damage existing mature trees and heritage trees. See UDC Section 35-523 (Tree Preservation) for specific requirements.
- ii. New Trees* – Select new trees based on site conditions. Avoid planting new trees in locations that could potentially cause damage to a historic structure or other historic elements. Species selection and planting procedure should be done in accordance with guidance from the City Arborist.

5. Sidewalks, Walkways, Driveways, and Curbing

A. SIDEWALKS AND WALKWAYS

- i. Maintenance*—Repair minor cracking, settling, or jamming along sidewalks to prevent uneven surfaces. Retain and repair historic sidewalk and walkway paving materials—often brick or concrete—in place.
- ii. Replacement materials*—Replace those portions of sidewalks or walkways that are deteriorated beyond repair. Every effort should be made to match existing sidewalk color and material.
- iii. Width and alignment*—Follow the historic alignment, configuration, and width of sidewalks and walkways. Alter the historic width or alignment only where absolutely necessary to accommodate the preservation of a significant tree.
- iv. Stamped concrete*—Preserve stamped street names, business insignias, or other historic elements of sidewalks and walkways when replacement is necessary.
- v. ADA compliance*—Limit removal of historic sidewalk materials to the immediate intersection when ramps are added to address ADA requirements.

B. DRIVEWAYS

- i. Driveway configuration*—Retain and repair in place historic driveway configurations, such as ribbon drives. Incorporate a similar driveway configuration—materials, width, and design—to that historically found on the site. Historic driveways are typically no wider than 10 feet. Pervious paving surfaces may be considered where replacement is necessary to increase stormwater infiltration.
- ii. Curb cuts and ramps*—Maintain the width and configuration of original curb cuts when replacing historic driveways. Avoid introducing new curb cuts where not historically found.

7. Off-Street Parking

A. LOCATION

- i. Preferred location*—Place parking areas for non-residential and mixed-use structures at the rear of the site, behind primary structures to hide them from the public right-of-way. On corner lots, place parking areas behind the primary structure and set them back as far as possible from the side streets. Parking areas to the side of the primary structure are acceptable when location behind the structure is not feasible. See UDC Section 35-310 for district-specific standards.
- ii. Front*—Do not add off-street parking areas within the front yard setback as to not disrupt the continuity of the streetscape.
- iii. Access*—Design off-street parking areas to be accessed from alleys or secondary streets rather than from principal streets whenever possible.

B. DESIGN

- i. Screening*—Screen off-street parking areas with a landscape buffer, wall, or ornamental fence two to four feet high—or a combination of these methods. Landscape buffers are preferred due to their ability to absorb carbon dioxide. See UDC Section 35-510 for buffer requirements.
- ii. Materials*—Use permeable parking surfaces when possible to reduce run-off and flooding. See UDC Section 35-526(j) for specific standards.
- iii. Parking structures*—Design new parking structures to be similar in scale, materials, and rhythm of the surrounding historic district when new parking structures are necessary.

Standard Specifications for Windows in Additions and New Construction

Consistent with the Historic Design Guidelines, the following recommendations are made for windows to be used in new construction:

- **GENERAL:** Windows used in new construction should be similar in appearance to those commonly found within the district in terms of size, profile, and configuration. While no material is expressly prohibited by the Historic Design Guidelines, a high quality wood or aluminum-clad wood window product often meets the Guidelines with the stipulations listed below.
- **SIZE:** Windows should feature traditional dimensions and proportions as found within the district.
- **SASH:** Meeting rails must be no taller than 1.25". Stiles must be no wider than 2.25". Top and bottom sashes must be equal in size unless otherwise approved.
- **DEPTH:** There should be a minimum of 2" in depth between the front face of the window trim and the front face of the top window sash. This must be accomplished by recessing the window sufficiently within the opening or with the installation of additional window trim to add thickness. All windows should be supplied in a block frame and exclude nailing fins which limit the ability to sufficiently recess the windows.
- **TRIM:** Window trim must feature traditional dimensions and architecturally appropriate casing and sloped sill detail.
- **GLAZING:** Windows should feature clear glass. Low-e or reflective coatings are not recommended for replacements. The glazing should not feature faux divided lights with an interior grille. If approved to match a historic window configuration, the window should feature true, exterior muntins.
- **COLOR:** Wood windows should feature a painted finish. If a clad or non-wood product is approved, white or metallic manufacturer's color is not allowed and color selection must be presented to staff.

FINDINGS:

- a. The applicant is requesting conceptual approval of a site plan for the construction of three (3), 1-story residential structures on the vacant lot at the southwest corner of Dawson and N Olive, located within the Dignowity Hill Historic District. These lots are currently unaddressed.
- b. **CONCEPTUAL APPROVAL** – Conceptual approval is the review of general design ideas and principles (such as scale and setback). Specific design details reviewed at this stage are not binding and may only be approved through a Certificate of Appropriateness for final approval.
- c. **DESIGN REVIEW COMMITTEE** – This request was reviewed by the Design Review Committee in November 2021. At that time, the Committee discussed setbacks, building orientation and site design.

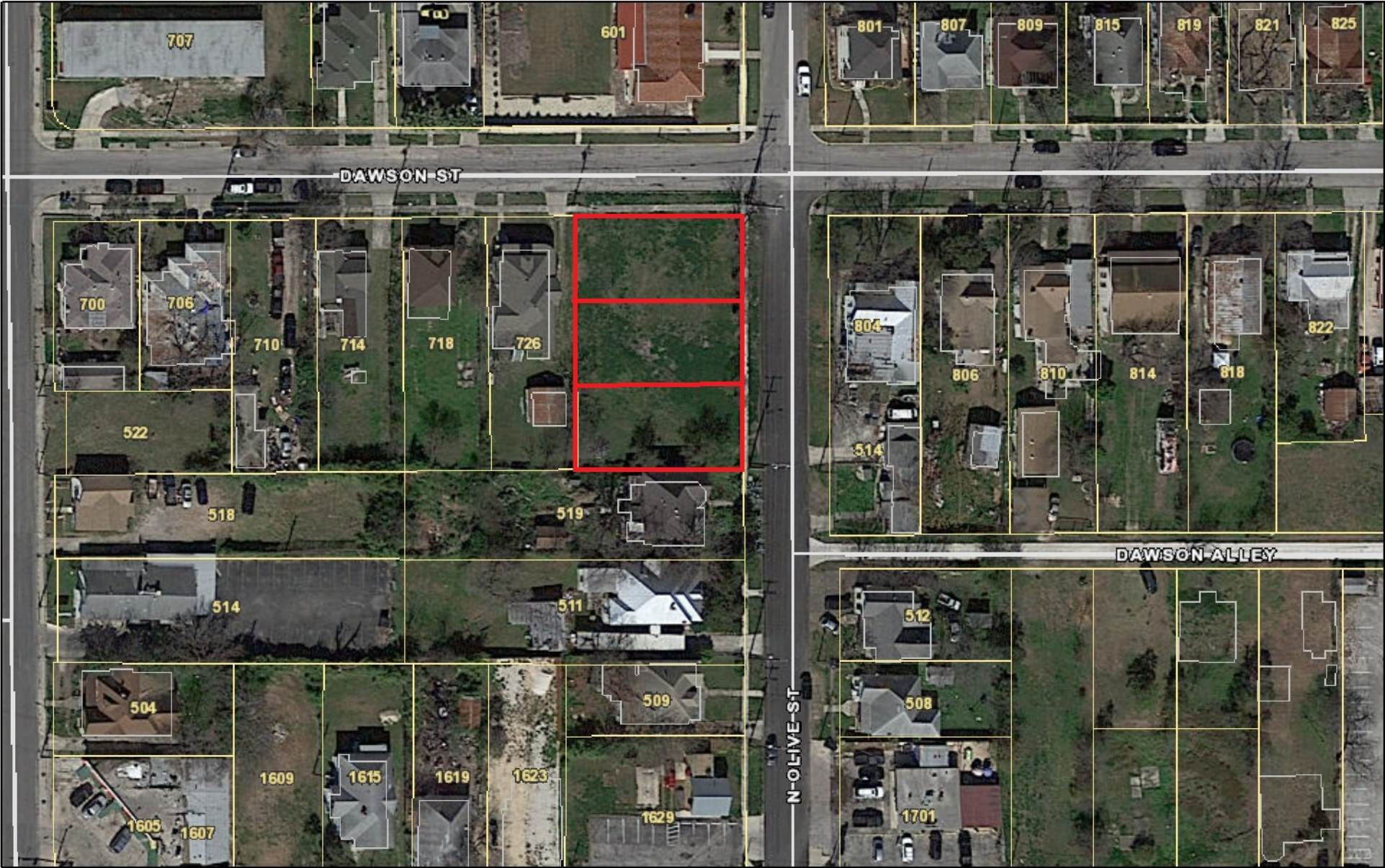
- d. **CONTEXT & DEVELOPMENT PATTERN** – This lot is currently void of any structures. This lot is bounded by Dawson Street to the north and N Olive Street to the east. Historic structures on the 500 block of N Olive and the 700 block of Dawson all feature one story in height. Corner structures found historically on Dawson Street feature an orientation toward Dawson.
- e. **SETBACKS (N Olive)**– According to the Guidelines for New Construction, the front facades of new buildings are to align with front facades of adjacent buildings where a consistent setback has been established along the street frontage. The applicant has proposed a setback for each structure on N Olive of approximately twenty (20) feet from the property line. Per the submitted site plan, the proposed setbacks are generally consistent with that of the historic structure at 519 N Olive. Staff finds that setbacks that are equal to or greater than that of the historic structure at 519 N Olive are appropriate. The applicant should clearly demonstrate an equal or greater setback.
- f. **SETBACKS (Dawson)** – According to the Guidelines for New Construction, the front facades of new buildings are to align with front facades of adjacent buildings where a consistent setback has been established along the street frontage. The applicant has proposed a setback on Dawson Street that is greater than that of the adjacent historic structure at 726 Dawson. 726 Dawson shares a front setback that is consistent with the other four historic structures on this block. Staff finds the proposed setback on Dawson to be appropriate and consistent with the Guidelines.
- g. **ORIENTATION (N Olive & Dawson)** – The Guidelines for New Construction note that the orientation of new construction should be oriented consistently with the historic examples found within the district. As noted in finding c, corner structures found historically on Dawson Street feature an orientation toward Dawson. Per the submitted site plan, the applicant has proposed a primary orientation toward N Olive, with architectural elements such as a wrap around porch to address Dawson Street. Staff finds that the proposed building orientation at the corner may be appropriate provided there is an entrance element (door) on the Dawson façade.
- h. **BUILDING SPACING** – This block of N Olive features building spacing that is less than what is found commonly throughout the district. Staff finds that the applicant should provide additional information noting proposed building spacing that is comparable to that which is found historically on this block of N Olive. What has been proposed, per the site plan may be appropriate with additional, accurate information.
- i. **DRIVEWAYS** – The applicant has proposed driveways of ten (10) feet of width for each lot. The proposed driveways on N Olive follow the historic driveway location, to the south of the structure. The proposed driveway on Dawson is located to the west of the structure, atypical for the existing driveway locations on this block; however, staff finds this to be an appropriate location to allow for adequate setbacks and setback from the intersection.
- j. **FRONT WALKWAYS** – Historic structures feature walkways that lead from the front porch to the sidewalk at the public right of way. The applicant has proposed for each house to feature a walkway leading to the sidewalk at N Olive. Staff finds the proposed walkways to be appropriate and consistent with the Guidelines.
- k. **GENERAL DESIGN** – The applicant has submitted street elevations providing information regarding façade arrangement, massing and overall heights. Generally, staff finds the proposed massing and architectural form of each structure to be appropriate; however, staff finds that fenestration patterns and window openings should be consistent with those found historically within the district. Small, contemporarily sized windows should be eliminated for windows that feature traditional sizes and profiles.
- l. **SITE ELEMENTS** – While developing additional design documents, staff finds that the applicant should also develop a detailed landscaping plan that is consistent with the Guidelines for Site Elements.

RECOMMENDATION:

Staff recommends conceptual approval of the proposed site plan, building setbacks and building orientation based on findings a through e with the following stipulations:

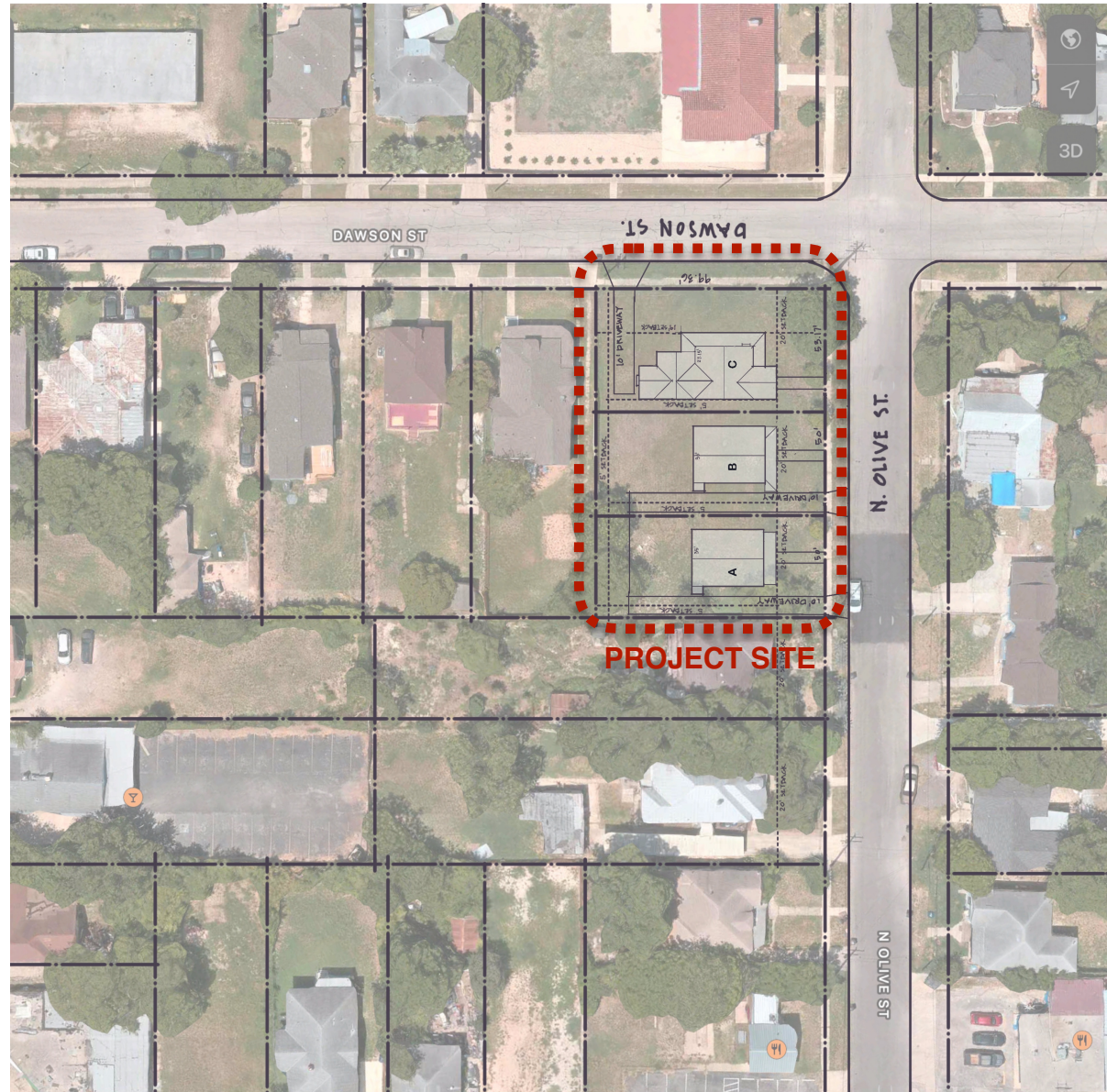
- i. That the applicant provide additional information to confirm a setback on N Olive street that is equal to or greater than that found at 519 N Olive for all three structures.
- ii. That the applicant provide specific measurements relating to building spacing that are consistent with building spacing found historically on N Olive.
- iii. That the applicant incorporate entrance elements, such as a door on the Dawson façade, as noted in finding g.
- iv. That the applicant incorporate traditionally sized and placed window opening when developing the design of each structure at noted in finding k.

City of San Antonio One Stop



April 1, 2022





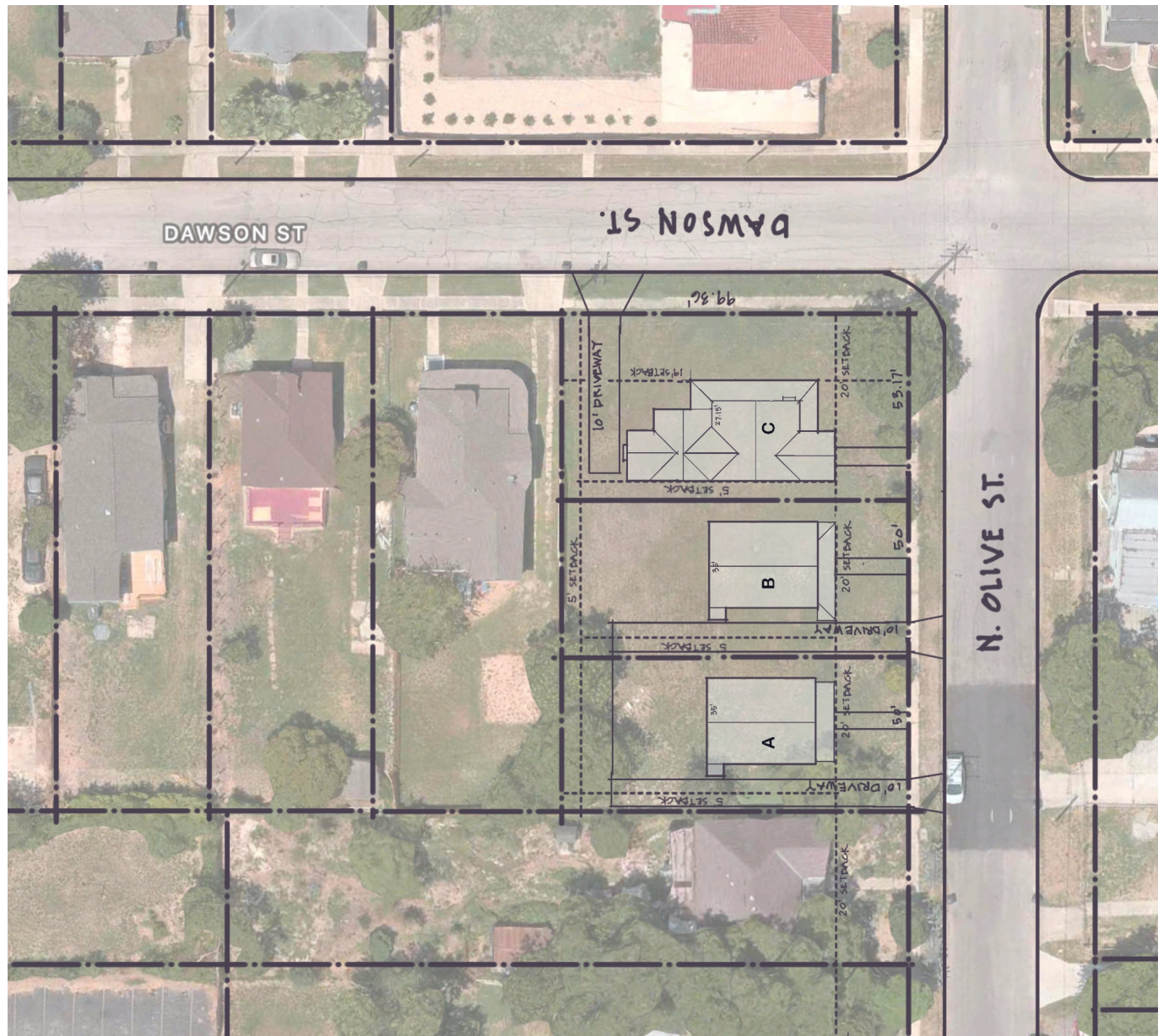
VICINITY MAP



Presentation for
Olive Street Residences

18 March 2022 / Lopez Salas Architects, Inc.
 Tx. Lic. #16232





KEY

A 1,575 SF. (31.7%)

B 1,575 SF. (31.7%)

C 1,575.88 SF. (29.8%)

SITE PLAN



Presentation for Olive Street Residences

18 March 2022 / Lopez Salas Architects, Inc.
Tx. Lic. #16232





PROPERTY C

DAWSON STREET

STREET VIEW



PROPERTY A



PROPERTY B



PROPERTY C



OLIVE STREET

DAWSON STREET

STREET VIEW



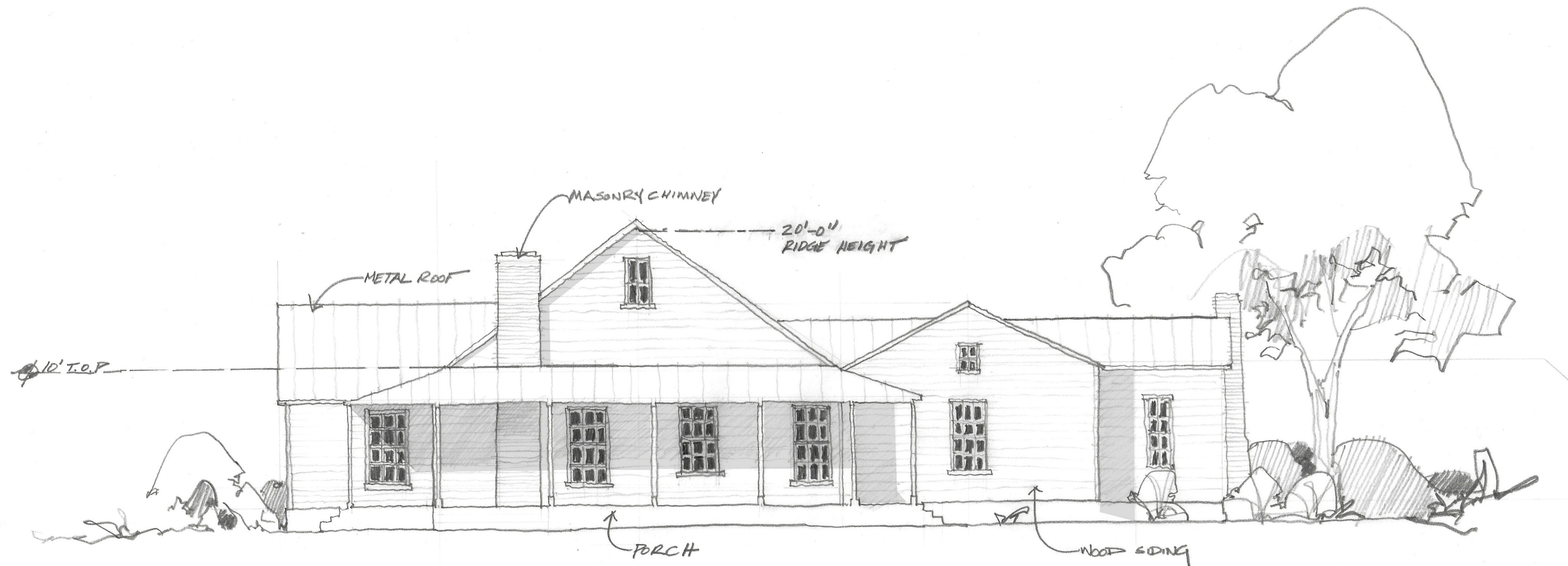
Presentation for
Olive Street Residences

18 March 2022 / Lopez Salas Architects, Inc.
Tx. Lic. #16232



Program:

Master Bedroom Suite---300 Sq Ft.
Guest Bedroom 01-----120 Sq Ft.
Guest Bedroom 02-----120 Sq Ft.
Guest Bathroom-----60 Sq Ft.
Kitchen-----220 Sq Ft.
Study-----120 Sq Ft.
Living Room-----200 Sq Ft.
Dining-----200 Sq Ft.
+- Total-----1,500 Sq Ft.



ELEVATION - DAWSON STREET
SCALE: 1/8" = 1'-0"

Olive Street Residences

November 15, 2021



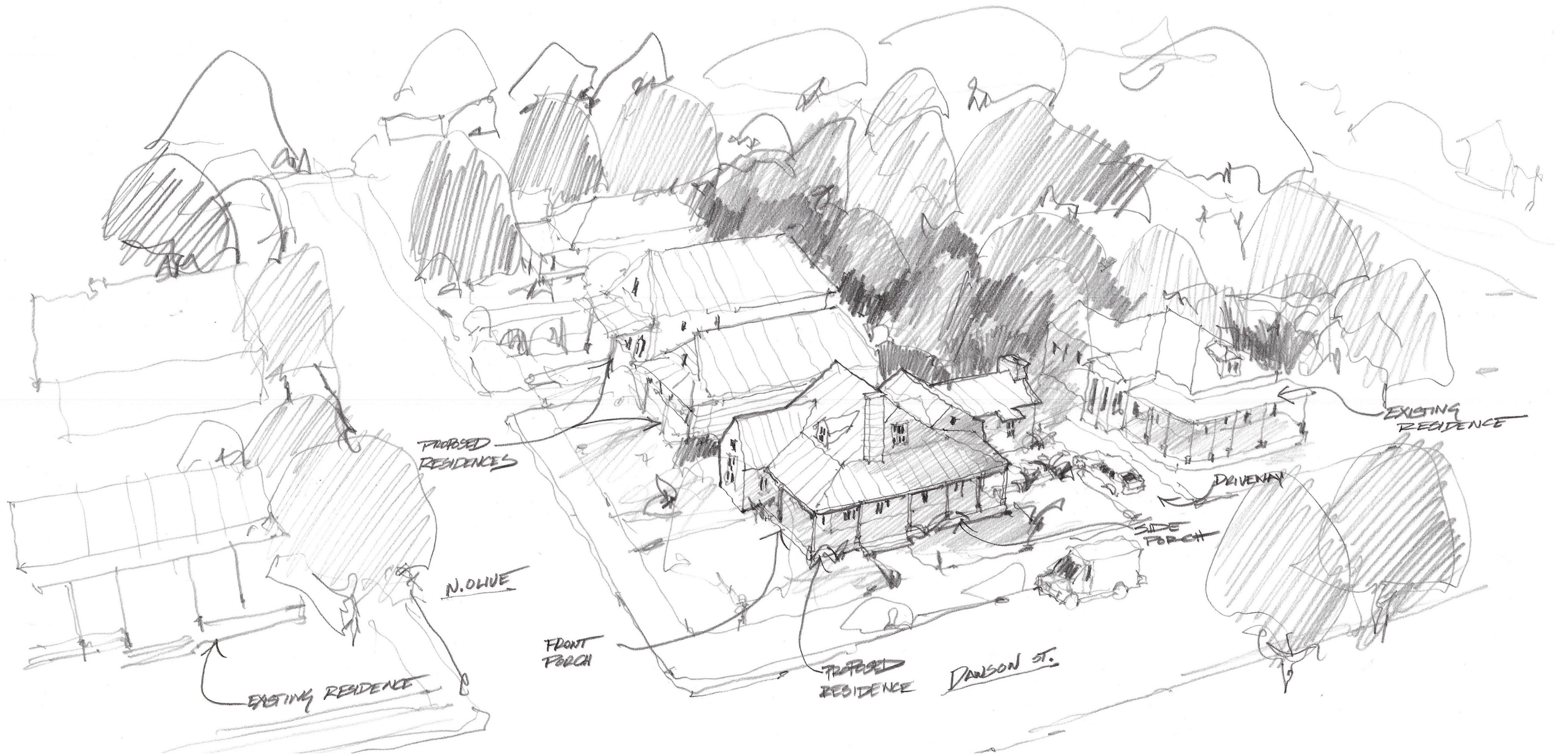
Olive Street Residences

Perspective
September 30, 2021



Olive Street Residences

Perspective
September 30, 2021



Olive Street Residences

Perspective
September 30, 2021